

AA **Alternative Air**

STORE FIXTURES

IV Lighting

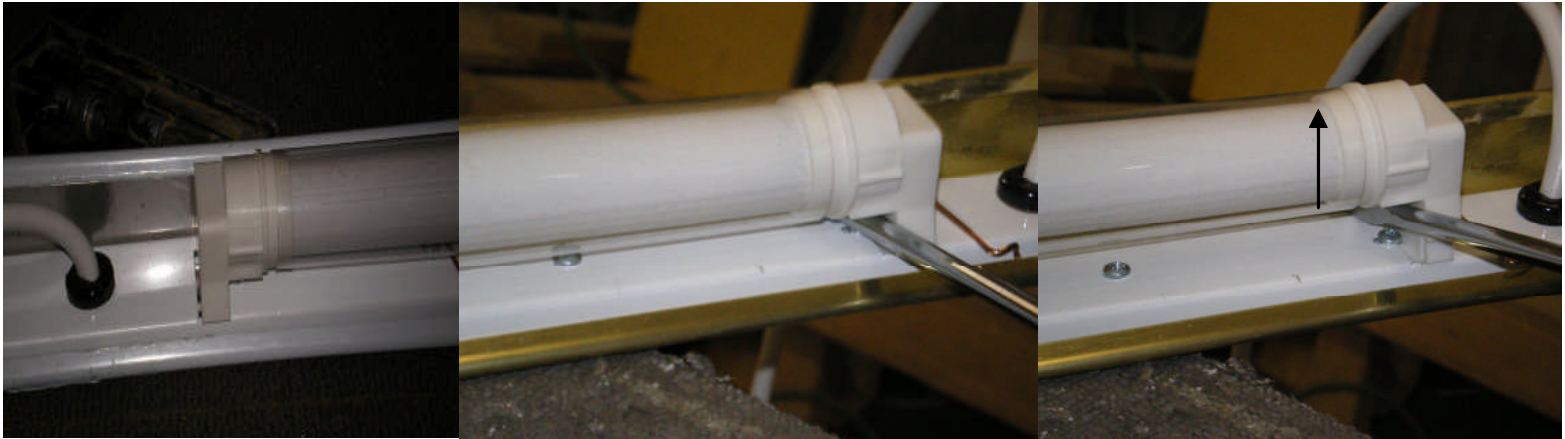
All lighting in the displays are florescent. All bulbs come with a plastic tube guard for product safety. If a bulb is replaced, the new light must be placed back into the plastic tube guard to maintain food safety certification for your display case.

A) BULB SIZES

- 1) 36"W Cases — F17T8 / SP41 GE Bulb
- 2) 48"W Cases — F25T8 / SP41 GE Bulb
- 3) 60"W Cases — F32T8 / SP41 GE Bulb
- 4) 72"W Cases — F40T8 / SP41 GE Bulb

All light bulbs are florescent and manufactured by general electric. Light bulbs can be purchased from your local electrical or lighting store. All bulbs listed above can be replaced with another manufacturer as long as they are equivalent in watts and brightness level.

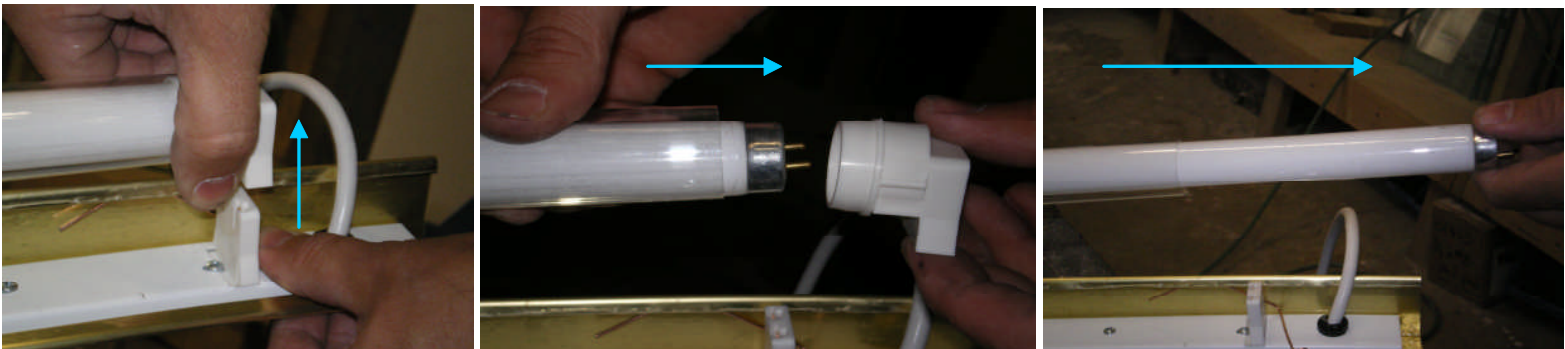
Light Removal



1) Light fixture and connector.

2) Carefully insert flat end of screwdriver directly under plastic connector.

3) Gently turn screw driver to pry directly off socket



4) Remove first one side than the other.

5) Connector slides off light pins.

6) Slide light out of protective acrylic tube.

NOTE:

Special care must be taken when placing screw driver under plastic connector to ensure that the screw driver does not come in contact with fluorescent glass tube.